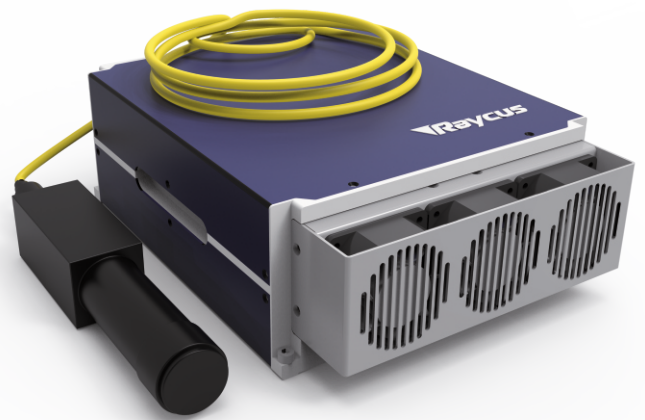


RFL-P120MX

MOPA FIBER LASER
Data sheet V 1.0

Features

- » High stable laser output
- » MOPA Technology
- » Short pulse setup
- » Very competitive price
- » Pulse width modifiable



TECHNICAL SPECIFICATIONS

Central wavelength	1060-1080 nm	Spectral width @350ns	<10nm
Output power	120 W	Delivery cable	¹⁾ 3 m
Max. pulse energy	1.5 mJ	Supply voltage DC	24 VDC
Range of power	0-100 %	Current consumption	<19 A
Repetition frequency	1-2000 kHz	Operating temperature	0 - 40 °C
Pulse width	<10-350 ns	Storage temperature	-10 - 60 °C
Power instability	<5 %	Colling method	Air
Beam diameter	6-8 mm	Laser dimension(mm)	363x320x120
Beam quality	<1.6 M ²	Net weight	< 12kg
Laser switching ON/OFF time	<100/30 μs		

¹⁾ optional 2/5 m

RFL-P120MX

Pulse width corresponds to the power reduction frequency point and the maximum single pulse energy

Pulse width (ns)	Power reduction frequency (kHz)	Upper frequency limit (kHz)	Max. single pulse energy (mJ)
10	1200	2000	0.10
20	600	2000	0.20
30	395	1000	0.30
60	240	1000	0.50
100	150	1000	0.80
200	95	500	1.25
250	85	500	1.40
350	80	400	1.50
CW	--	--	CW

