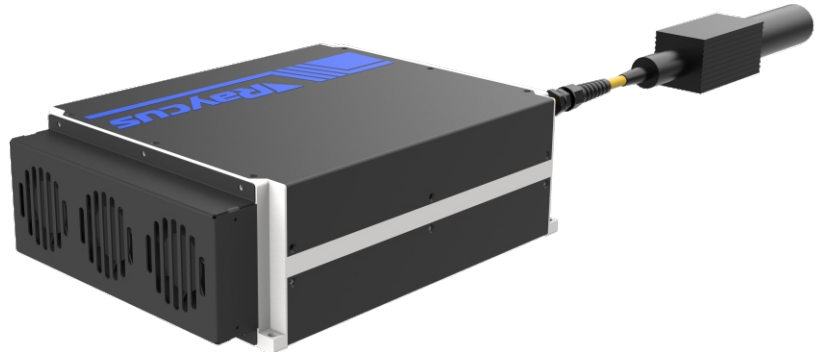


RFL-P20QH

PULSED FIBER LASER
Data sheet V 1.0

Features

- » Excellent beam quality $<1.4M^2$
- » Pulse rise time $<2\mu s$
- » Pulse frequency 2-500kHz
- » Intelligent cooling system
- » Performance Level E



TECHNICAL SPECIFICATIONS

Central Wavelength	1060-1080 nm	Spectral width @3dB	$<30\text{nm}$
Output power	20 W	Delivery cable	⁽¹⁾ 3 m
Max. pulse energy	1 mJ	Supply voltage DC	24 VDC
Range of power	1-100 %	Current consumption	$<7\text{ A}$
Repetition frequency	2-500 kHz	Operating temperature	0 - 40 °C
Pulse width	80-120 ns (30kHz)	Storage temperature	-10 - 60 °C
Power instability	$<3\%$	Cooling method	Air
Beam diameter	6-8 mm	Laser dimension(mm)	215x290x95
Beam quality	$<1.4 M^2$	Net weight	$<6\text{ kg}$
Laser switching ON/OFF time	$<2\mu s$		

⁽¹⁾ optional 2/5 m

RFL-P20QB

