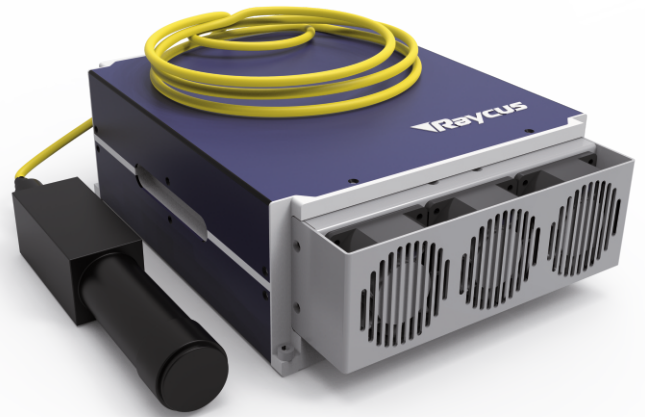


RFL-P200MX

MOPA FIBER LASER
Data sheet V 1.0

Features

- » High stable laser output
- » MOPA Technology
- » Short pulse setup
- » Very competitive price
- » Pulse width modifiable



TECHNICAL SPECIFICATIONS

Central wavelength	1060-1080 nm
Output power	200 W
Max. pulse energy	1.5 mJ
Range of power	0-100 %
Repetition frequency	1-4000 kHz
Pulse width	<10-350 ns
Power instability	<5 %
Beam diameter	6-8 mm
Beam quality	<1.8 M ²
Laser switching ON/OFF time	<100/30 μs

Spectral width @350ns	<10nm
Delivery cable	¹⁾ 3 m
Supply voltage DC	48 VDC
Current consumption	<17 A
Operating temperature	0 - 40 °C
Storage temperature	-10 - 60 °C
Colling method	Air
Laser dimension(mm)	363x320x120
Net weight	< 16kg

¹⁾ optional 2/5 m

RFL-P200MX

Pulse width corresponds to the power reduction frequency point and the maximum single pulse energy

Pulse width (ns)	Power reduction frequency (kHz)	Upper frequency limit (kHz)	Max. single pulse energy (mJ)
10	3000	4000	0.06
20	2000	3000	0.16
30	900	3000	0.22
60	550	2000	0.36
100	350	1000	0.57
200	170	1000	1.10
250	150	900	1.3
350	130	600	1.50
CW	--	--	CW

