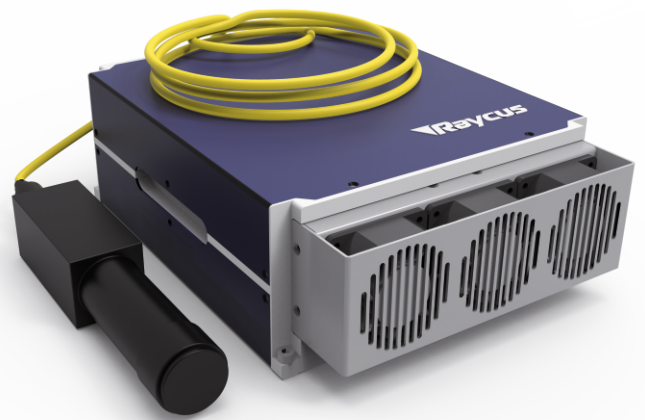


RFL-P100MX

MOPA FIBER LASER
Data sheet V 1.0

Features

- » High stable laser output
- » MOPA Technology
- » Short pulse setup
- » Very competitive price
- » Pulse width modifiable



TECHNICAL SPECIFICATIONS

Central wavelength	1060-1080 nm	Spectral width @350ns	<10nm
Output power	100 W	Delivery cable	¹⁾ 3 m
Max. pulse energy	1.5 mJ	Supply voltage DC	24 VDC
Range of power	0-100 %	Current consumption	<19 A
Repetition frequency	1-2000 kHz	Operating temperature	0 - 40 °C
Pulse width	<10-350 ns	Storage temperature	-10 - 60 °C
Power instability	<5 %	Colling method	Air
Beam diameter	6-8 mm	Laser dimension(mm)	363x320x120
Beam quality	<1.6 M ²	Net weight	< 12kg
Laser switching ON/OFF time	<100/30 μs		

¹⁾ optional 2/5 m

RFL-P100MX

Pulse width corresponds to the power reduction frequency point and the maximum single pulse energy

Pulse width (ns)	Power reduction frequency (kHz)	Upper frequency limit (kHz)	Max. single pulse energy (mJ)
10	1000	2000	0.10
20	500	2000	0.20
30	330	1000	0.30
60	200	1000	0.50
100	125	1000	0.80
200	80	500	1.25
250	72	500	1.40
350	66	400	1.50
CW	--	--	CW

