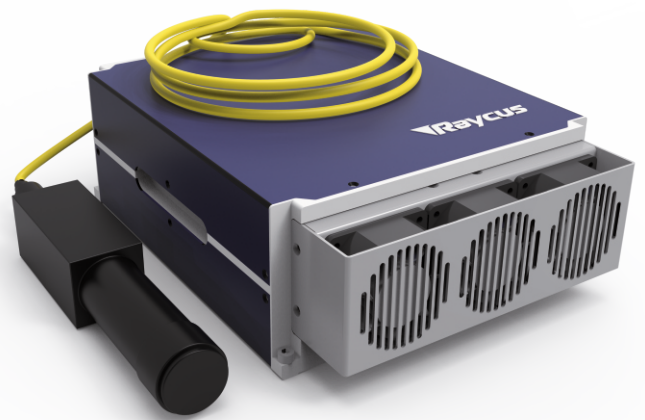


RFL-P20MX

MOPA FIBER LASER
Data sheet V 1.0

Features

- » High stable laser output
- » MOPA Technology
- » Short pulse setup
- » Very competitive price
- » Pulse width modifiable



TECHNICAL SPECIFICATIONS

Central Wavelength	1060-1080 nm	Spectral width (@3dB)	<30nm
Output power	20 W	Delivery cable	⁽¹⁾ 3 m
Max. pulse energy	0.71 mJ	Supply voltage DC	24 VDC
Range of power	10-100 %	Current consumption	<7 A
Repetition frequency	1-2000 kHz	Operating temperature	0 - 40 °C
Pulse width	<2-500 ns	Storage temperature	-10 - 60 °C
Power instability	<3 %	Colling method	Air
Beam diameter	6-8 mm	Laser dimension(mm)	286x215x95
Beam quality	<1.5 M ²	Net weight	< 6kg
Laser switching ON/OFF time	<20/2 μs		

⁽¹⁾ optional 2/5 m

RFL-P20MX

Pulse width corresponds to the power reduction frequency point and the maximum single pulse energy

Pulse width (ns)	Power reduction frequency (kHz)	Upper frequency limit (kHz)	Max. single pulse energy (mJ)
2	2000	2000	0.01
4	500	2000	0.04
8	300	1000	0.07
14	200	1000	0.10
20	150	1000	0.13
30	100	1000	0.20
50	80	1000	0.25
100	60	1000	0.33
200	40	500	0.50
250	36	400	0.56
350	32	400	0.62
500	28	300	0.71
600	--		CW

