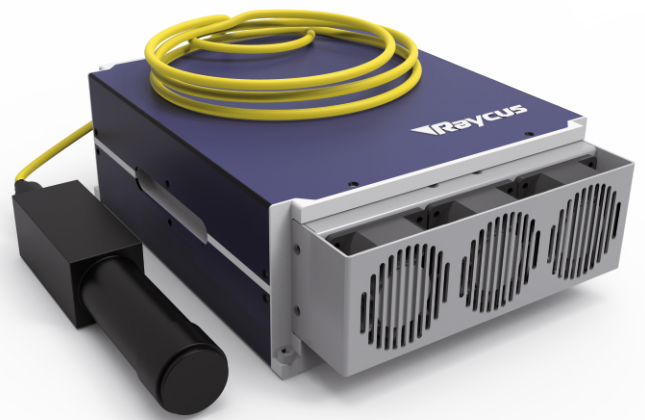


## RFL-P70MX

MOPA FIBER LASER  
Data sheet V 1.0

### Features

- » High stable laser output
- » MOPA Technology
- » Short pulse setup
- » Very competitive price
- » Pulse width modifiable



## TECHNICAL SPECIFICATIONS

Central wavelength	1060-1080 nm	Spectral width @350ns	<10nm
Output power	70 W	Delivery cable	<sup>1)</sup> 3 m
Max. pulse energy	1.5 mJ	Supply voltage DC	24 VDC
Range of power	10-100 %	Current consumption	<19 A
Repetition frequency	1-2000 kHz	Operating temperature	0 - 40 °C
Pulse width	<10-350 ns	Storage temperature	-10 - 60 °C
Power instability	<5 %	Colling method	Air
Beam diameter	6-8 mm	Laser dimension(mm)	350x320x120
Beam quality	<1.6 M <sup>2</sup>	Net weight	< 12kg
Laser switching ON/OFF time	<20/2 μs		

<sup>1)</sup> optional 2/5 m

## RFL-P70MX

Pulse width corresponds to the power reduction frequency point and the maximum single pulse energy

Pulse width (ns)	Power reduction frequency (kHz)	Upper frequency limit (kHz)	Max. single pulse energy (mJ)
10	700	2000	0.10
20	350	2000	0.20
30	231	1000	0.30
60	140	1000	0.50
100	88	1000	0.80
200	56	500	1.25
250	51	500	1.37
350	46	400	1.50
CW	--	--	CW

